





Installing and Opening IStation on an iPad






You will need the IStation app installed on your iPad!

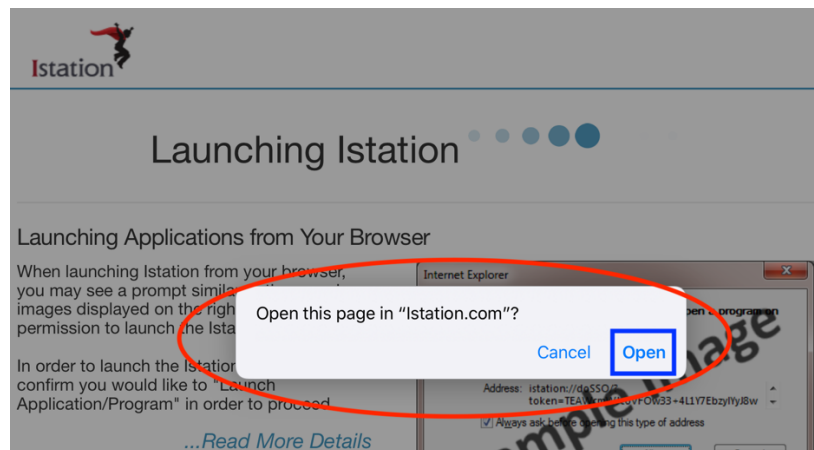
*****PLEASE DO NOT OPEN THE ISTATION APP DIRECTLY. IStation should be opened through the NCEdCloud website, using Clever.*****

Downloading the IStation app:

- On a GCS iPad, the IStation app can be installed from the “Self Service” app  or the “Manager” app  depending on which GCS iPad you’re using. **Click to download, but do not open it.**
 - GCS iPads in blue and orange cases, and gray cases, will use the Self Service app.
 - GCS iPads in other cases will use the Manager app. Open the Manager app and then select the button labeled ‘Self Service’ on the lower right-hand corner.
- On a personally owned iPad, you can find IStation in the Apple App Store by searching for “IStation”. Find that and download it, but **do not open it.**

Instructions for Use:

1. *On a GCS iPad:* Open the NCEdCloud icon on your Home Screen. 
 - a. *On a personally owned iPad:* open the web browser of your choice (preferably Safari  or Chrome ) and go to my.ncedcloud.org
2. Log into NCEdCloud using your student ID number and NCEdCloud password.
3. Select **Clever**. 
4. After Clever opens, scroll down to the IStation logo and click it. 
5. The first time you open this, you might be prompted to “Open this page in Istation.com?”. Select **OPEN**.



6. This will open the IStation app, and after a few moments it will be logged in and ready *as that student*. You can verify this in the IStation app on the first page: it will show your child’s name in the upper left-hand corner as “Welcome, <student name>”.