



# KINDERGARTEN KICKOFF FAMILY INFORMATION SESSION

---

**March 2024**

WHITNEY OAKLEY, ED.D. | SUPERINTENDENT

# Welcome

---

Our School  
Community

Kindergarten  
Transition &  
Readiness

Next Steps



How are you (as parents)  
feeling about your child  
starting Kindergarten?



**2:00**

# School Staff

- **Principal-** Ms. Villarrubia
- **Assistant Principal-** Mrs. Harper
- **Curriculum Facilitator-** Ms. Johnson
- **Instructional Support-** Ms. Beringer
- **Counselors-** Mrs. Brown, Mrs. Norman



# School Staff: Kindergarten Teachers

---



Ms. Anderson and Mr. Stewart



Miss Cunningham and Mrs. Qunbar



Mrs. Kumar and Mrs. Lathery



Mrs. Perlmutter and Mrs. Huffman



Mrs. Powell and Ms. Dallas

# All About Jefferson Elementary School



## THE JES WAYS

THE JEFFERSON

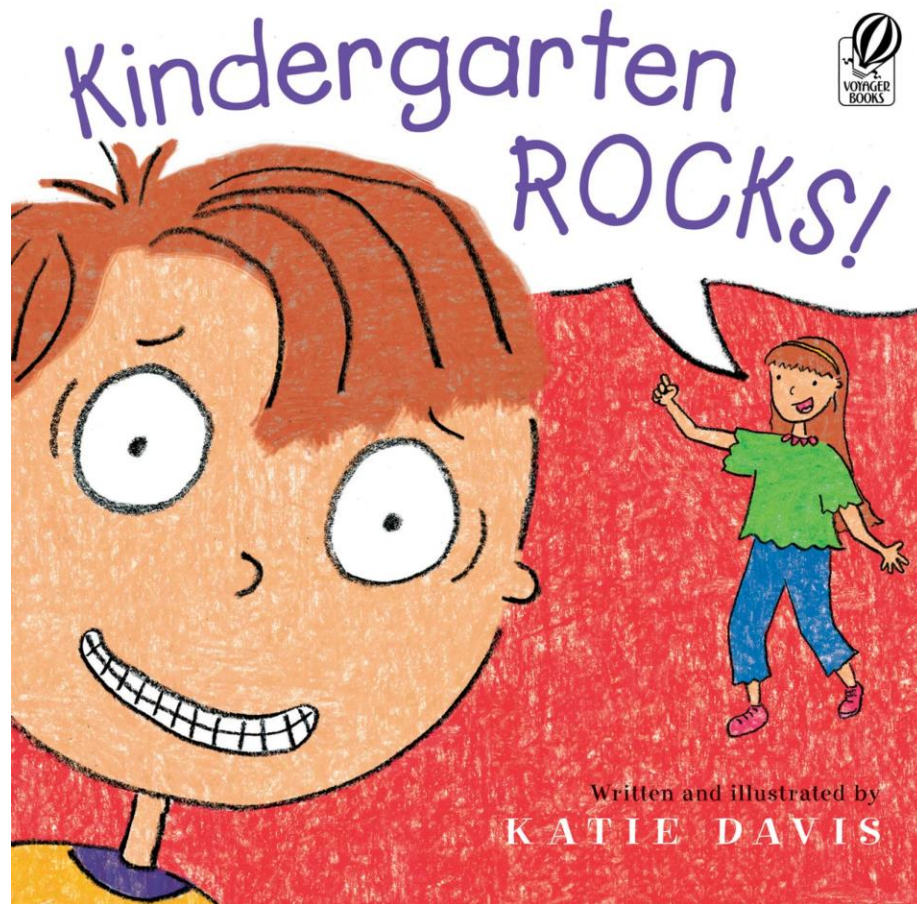
**W** WORDS MATTER

**A** ACTIONS MATTER

**Y** YOU MATTER

**S** SAFETY MATTERS

# Kindergarten Rocks! STEAM Lab



# All About Jefferson Elementary School

---



- Join class Remind account to receive classroom updates
- Join JES on social media as well – Facebook, Instagram, Twitter
- <https://www.flowcode.com/page/thejesways>





# Jefferson Elementary School PTO



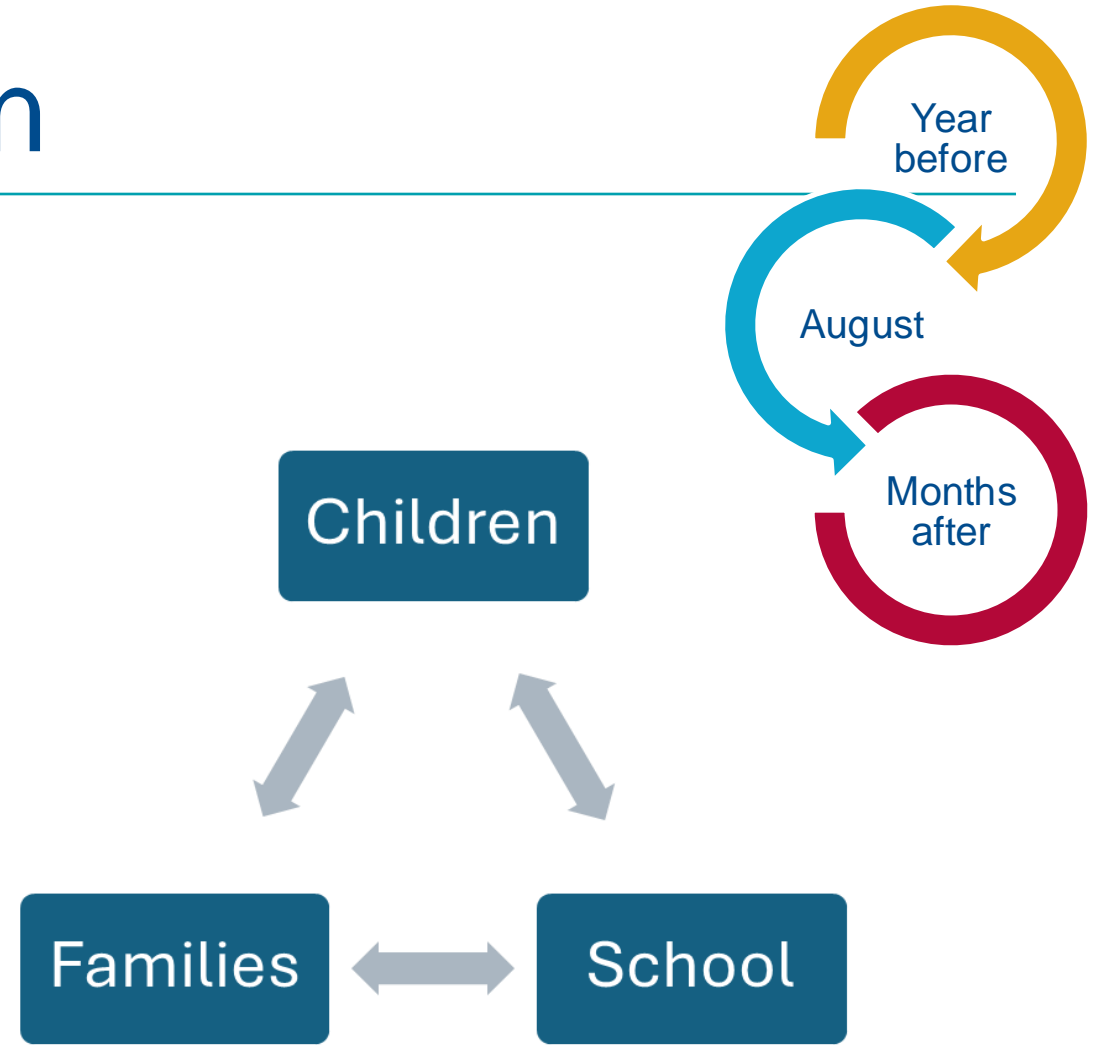
# Jefferson Elementary School Attendance

**Mrs. Sam Zawistowski-Social Worker**

**423-attendance@gcsnc.com**



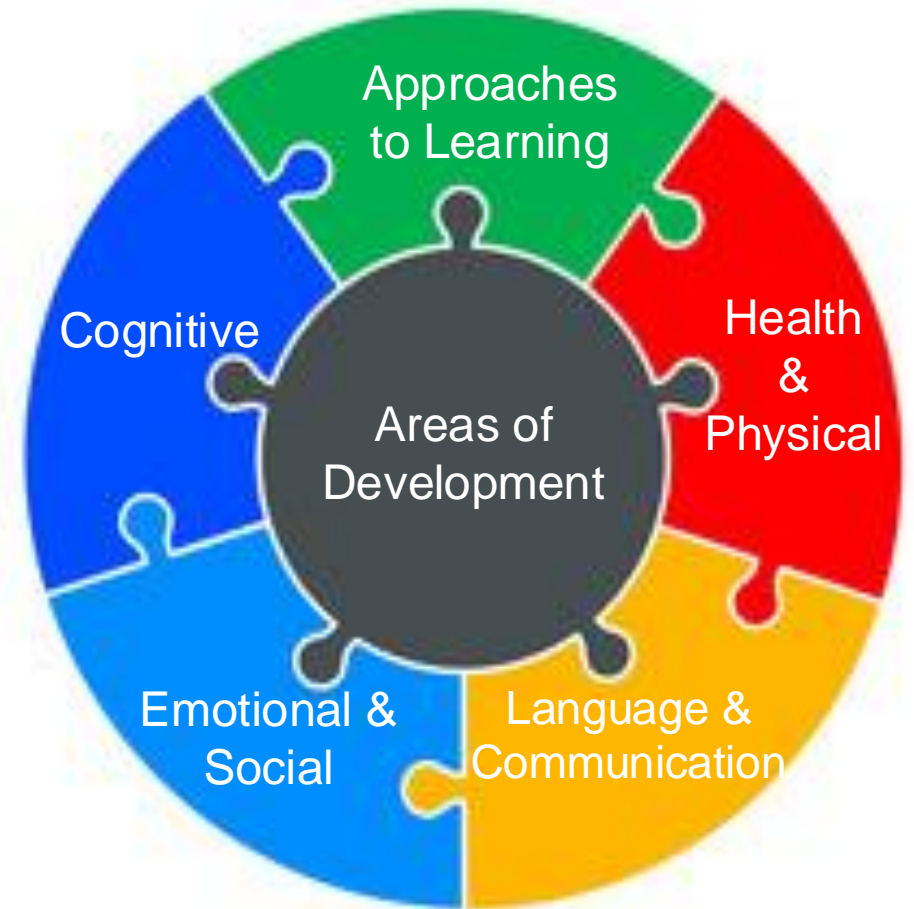
# Kindergarten Transition



# Kindergarten Readiness

---

- ALL children turning five years old on or before August 31st can attend kindergarten in Guilford County Schools next school year!
- Kindergarten readiness refers to the skills a child brings to the school community when he or she enters kindergarten. Children demonstrate skills across five areas of development.



# JES Kindergarten Readiness

---

- Practice tying shoes, toileting needs, and zipping coats/fastening buttons.
- Wean off naps during the summer. Have a consistent wake-up/bedtime.
- Read, read, read with your child.



# JES Kindergarten Readiness

---

- Check backpacks EVERY DAY.
- Dress your child appropriately. Send an extra change of clothes (seasonally send a new set)
- If your phone number or address changes, please let the teacher know **immediately**.
- When your child is absent, email [423-attendance@gcsnc.com](mailto:423-attendance@gcsnc.com)
- **If there is a change in transportation, send a written note.**



# Readiness Resources

## Transition to Kindergarten Monthly Calendars

**January** 2025  
 Guilford County  
 Transition to  
 Kindergarten  
 Calendar

Sunday	Monday	Tuesday	Wednesday	Thursday	Friday	Saturday
Reading with your child builds key skills and makes learning fun. Start by flipping through picture books to predict the story, point to words as you read and reread favorite books to build confidence and vocabulary.		<b>Hello Winter</b>	1 Visit your local library to check-out books for the month	2 Tape down paper "snowflakes" with letters and hop to named letters	3 Count cotton balls into numbered cups	4 Thread yarn through pre-punched snowflake shapes
5 Use cotton balls and paper to create a snowy scene	6 Mix baking soda and water to make "snow"	7 Sing the Song "Snowflakes Falling Down" Song (Words on back)	8 Toss soft balls at a "snowman"	9 Pretend to serve hot cocoa with cups and play money	10 Write things you're thankful for on paper snowflakes	11 Pretend to save toy animals from "ice" (bowl of water)
12 Write letters in salt trays to mimic icicles	13 Build a snowman using circles, squares, and triangles	14 Move ice cubes using spoons for a fun challenge	15 Make a snow globe by drawing a winter scene and "seal" it in a clear plastic plate	16 Track the temperature or snowfall daily	17 Sing the Song "Building a Snowman" (Words on back)	18 Draw snowmen with different facial expressions
19 Retell a favorite winter story using toys	20 Sing the Song "The Mitten Song" (Words on back)	21 Create patterns using block shapes or cutouts	22 Sort buttons by size or color using tongs	23 Use string and blue paint to make dripping icicle art	24 Predict and test how long ice cubes take to melt	25 Look for animal tracks outside or create some with toys
26 Race to "dress" a snowman with scarves and hats	27 Build winter houses from blocks and decorate with paper cutouts	28 Pretend to "fix" a snowman with missing parts	29 Do one kind act each day throughout the month	30 Match paper mittens with numbers or patterns	31 Discuss how winter activities make you feel	



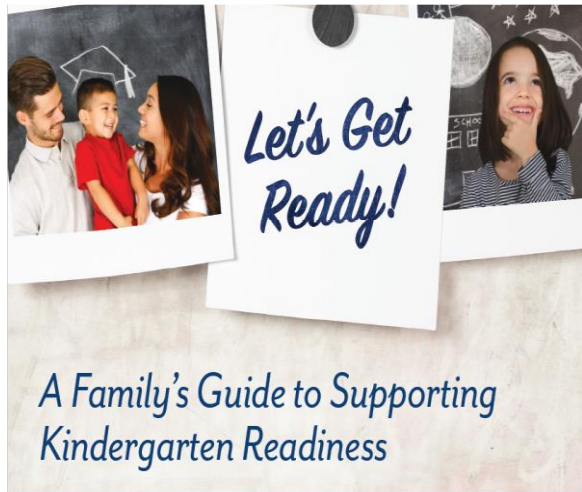
Scan Here to Check Out Local Events

## Kindergarten Readiness Bags



# Readiness Resources

---



*A Family's Guide to Supporting  
Kindergarten Readiness*

[www.bit.ly/kreadyguide](http://www.bit.ly/kreadyguide)

A Family's Guide to Supporting  
Kindergarten Readiness



[www.guilfordbasics.org](http://www.guilfordbasics.org)

The Guilford Basics



[www.readbondgrow.org](http://www.readbondgrow.org)

Read Bond Grow



# Kindergarten Bound in GCS!

---



August

2025

SUN	MON	TUE	WED	THU	FRI	SAT
					1	2
3	4	5	6	7	8	9
10	11	12	13	14	15	16
17	18	19	20	21	22	23
24	25	26	27	28	29	30
31						

# Registration

Gather Required documents

Create SchoolMint account

Complete Registration

## Registering Your Student



The following information will help you prepare to register your child for kindergarten using the Schoolmint online registration system. Your child must be five years old on or before August 31 to enroll.

### Confirm eligibility

All Guilford County Schools students must reside with a parent or court-appointed legal guardian who is a district resident.

### Find your child's school assignment

Use our School Assignment Locator at [schoolassignmentlocator.gcsnc.com](http://schoolassignmentlocator.gcsnc.com) or call the Student Assignment Office at (336) 370-8303 if you need assistance finding your school assignment.

### Gather required documents

Parents or court-appointed guardians must submit the following required documents in Schoolmint to register your kindergarten student. Some documents must be requested from your child's health care provider. Collect this information before beginning the registration process to make sure you have everything you need.

1. Child's certified birth certificate
2. North Carolina Health Assessment Transmittal Form certified by your child's health care provider
3. Immunizations (shots) records from your child's health care provider
4. Proof of residence showing name and address (CHOOSE ONE): All items below must be in the name of the parent(s) or court-appointed guardian
  - Current, original gas, oil, water or electric bill (not acceptable.)
  - Official lease agreement
  - Driver's license (or State ID card from Department of Transportation) AND car registration card from the Board of Elections
  - Driver's license (or State ID card) AND car registration card
  - Driver's license (or State ID card) AND letter verifying address
  - Driver's license (or State ID card) or voter registration card

### Create Schoolmint account and complete registration

Log in or create your account at [gcsnc.schoolmint.net](http://gcsnc.schoolmint.net) and enter your phone number. Follow the steps in Schoolmint to complete registration and upload your registration documents in the system. If you need assistance, contact the Student Assignment Office at (336) 370-8303.

## Frequently Asked Questions

### How do I obtain my child's health records?

The North Carolina Health Assessment Transmittal Form is the form the health care provider fills out after examining your child and is required by state law. Forms are available at elementary schools and some pediatrician offices. You may also download it at [www.gcsnc.com](http://www.gcsnc.com) and click on "Departments" and "Health Services and Nursing." The form is found in the "Health Assessment Requirements" section.

You can get a copy of your child's immunization records from your child's health care provider.

Immunizations required by state law include:

- Diphtheria, Tetanus, acellular Pertussis (DtaP). Five doses required. If the fourth dose is after your child's fourth birthday, a fifth dose is not required.
- Inactivated Polio Vaccine or Oral Polio Vaccine (IPV or OPV). Four doses required. The booster (fourth) dose is required on or after the fourth birthday and before entering school for the first time.
- Measles. Two doses, with the first dose on or after your child's first birthday.
- Mumps. One dose on or after your child's first birthday.
- Rubella. One dose on or after your child's first birthday.
- Haemophilus Influenza Vaccine (Hib). One dose.
- Hepatitis B. Three doses.
- Varicella. Two doses administered at least 28 days apart, with the second dose before entering school for the first time.

### How do I obtain a certified copy of my child's birth certificate?

Contact the Register of Deeds in the county or state where your child was born. If your child was born in Guilford County, you can contact the Register of Deeds at (336) 641-7556.

### What if my family is in transition?

If you are experiencing homelessness, your child has certain educational rights under federal legislation. Forms and information are available at each school.

A Student in Transition Affidavit must be completed for each child. For questions, contact the office of Homeless and Transitional Services at (336) 370-2329.

Beginning July 1, 2025, registration will take no longer take place on SchoolMint. Please contact your child's school for more information.



\*After July 1, SchoolMint registration system will no longer be available.

Registration for the 2025-26 school year will open on Feb. 25, 2025. If your child will be 5 by August 31, register online at [gcsnc.schoolmint.net](https://gcsnc.schoolmint.net).

## Here's what you need!

- ✓ Child's birth certificate
- ✓ Child's immunization record
- ✓ Proof of address

# What documents are needed?

---

1. Child's certified birth certificate
2. North Carolina Health Assessment Transmittal Form certified by your child's health care provider
3. Immunizations (shots) records from your child's health care provider
4. Proof of residence showing name and address (CHOOSE ONE): All items below must be in the name of the parent(s) or court-appointed guardian/custodian.
  - Current, original gas, oil, water or electric bill. (Telephone and cable television bills are not acceptable.)
  - Official lease agreement
  - Driver's license (or State ID card from Department of Motor Vehicles) AND voter registration card from the Board of Elections Office
  - Driver's license (or State ID card) AND car registration
  - Driver's license (or State ID card) AND letter from employer on company letterhead verifying address
  - Driver's license (or State ID card) or voter registration card AND Medicaid card

# Meals

---

Breakfast and lunch  
served daily

All meals  
are free!



# School Nurse: Ms. Owens

---

- Check in with me if student has a medical condition (asthma, seizures, diabetes, food allergies, auto immune disorder, etc.)
- If students will possibly need to take any medication during the school day, please let me know.
- GCS medication policy



# Open House

---



## Open House

- The week before school
- A time to meet your child's teachers

# After School Care

---

- **ACES:** Guilford County after-school care enrichment services. ACES is offered daily from the time of dismissal until 6 p.m. ACES does not operate when school is closed ( inclement weather, winter breaks, spring break and teacher workdays). ACES will not operate ACES All Days on Teacher Workdays for the 2024-2025 school year. (online the Jefferson Elementary School webpage there is a tab for ACES, there will be a link posted for the 2025-2026 when enrollment opens).
- **Childtime of Greensboro** After School Hours: **Open:** M-F, 6:30 AM - 6:00 PM. For more information please call **877.483.0033** **Transportation is an option**



# After School Care

---

- **Tiger Kim**'s Afterschool program: Kindergarten through 6th grade, 3 locations: Clemmons, Greensboro, and Winston-Salem, Transportation from school to Tiger Kim's, Workday and camp day drop-off time (8am), Pick-up Time (6pm). For more information: [After-School Program for Clemmons, Greensboro and Winston-Salem - Tiger Kim's Tae Kwon Do](#)
- **Super Kids After School Care** program at Guilford United Methodist Church. Monday through Friday - 2:30-6:00 p.m. SUPER KIDS After School also provides full-day care for specified Teacher Workdays. Transportation from School. For more information, please contact the SUPER KIDS After School Director at (336) 294-6730 or [afterschool@guilfordcollegeumc.org](mailto:afterschool@guilfordcollegeumc.org).

# After School Care

---


- **The Spears Family YMCA: After school Hours:** Monday – Friday | 2:30 p.m. – 6 p.m. and or **Teacher Workday Hours:** 7:30 a.m. – 6 p.m. Spears YMCA will pick up from Jefferson. For more information email:  
Catherine Stallings      [catherine.stallings@ymcagreensboro.org](mailto:catherine.stallings@ymcagreensboro.org)

# Transportation

GCS will create a bus stop near your house for the first day of school!  
Register early!



Haga Clic Aquí para Español [Español](#)

 **GUILFORD**  
County Schools  
SOAR TO GREATNESS

### School Transportation Request

Please verify your student. [\(If you are new to GCS and do not have a Student ID, click here.\)](#)

Student Birthdate   (MM/DD/YYYY)

Student ID/Lunch Number  [Retrieve Student](#)

# Questions



# Family Feedback form

---

Kindergarten Kickoff Family  
Feedback Form



Please take a moment to fill out  
the family feedback form.  
Available in Spanish, Vietnamese,  
Arabic, and Urdu.

✓ English (United States)

Español (México)

Tiếng Việt

أردو

العربية