

LINDLEY ELEMENTARY RELOCATION & PROJECT UPDATES

May 20, 2025 | Informational

WHITNEY OAKLEY, ED.D. | SUPERINTENDENT



Why We're Moving

Goal: Make moving a smooth transition with minimal impact to students and staff.

- Lindley Elementary School is being rebuilt as part of the 2022 School Bond Program.
- Murphey Traditional Academy will serve as our temporary home starting in Fall 2025.



Relocation, Design, & Construction Timeline

Relocation Timeline

- Staff Relocation from Lindley: June 2025
- Murphey Modifications: June – July 2025
- Students Start at Murphey: August 2025

Design & Construction Timeline

- Complete Design Development Phase: July 2025
- Construction Document Phase: July – Oct. 2025
- Existing Building Abatement/Demolition: August 2025
- Design Completion: October 2025
- Procurement Phase: Sept. 2025 – Dec. 2025
- Projected Construction Start: January 2026
- Projected Completion: July 2027

Please note: This schedule is subject to change based on project developments.

Swing School Consideration Factors

- Safety, Security & Supervision
- Programmatic Compatibility
- Timing & Facility Availability
- Location & Proximity
- Capacity & Layout
- Transportation & Accessibility
- Facility Condition & Infrastructure
- Renovation Feasibility
- Policy Code: 4150 School Assignment

Murphey Site Safety, Capacity and Readiness

- **Safety & Proximity to Jackson Middle**

- GCS School Safety & Emergency Management continues to coordinate safety protocols between Murphey and Jackson
- Focus remains on ensuring ongoing student safety and well-being throughout the transition

- **Facility Size & Capacity**

- Murphey has a smaller footprint than Lindley, but space is optimized through:
 - Efficient room use;
 - Supplemental mobile units; and
 - Planned instructional adjustments to ensure all needs are safely and fully accommodated during the transition.
- Jackson Middle's 400-wing at Jackson Middle is exclusively reserved to meet any additional needs

- **Facility Improvements**

- Targeted upgrades have significantly improved Murphey's safety, functionality and instructional readiness
- Murphey meets current operational and educational standards to serve as an interim site

Murphey Campus Planning & Site Preparedness

- **Murphey Campus Readiness**

- Key improvements were made prior to the Foust occupancy
- Murphey Elementary was assessed to prioritize essential upgrades and cosmetic improvements
- The campus is safe, functional, and ready for students and staff.

- **Contingency Planning**

- GCS is prepared to implement backup plans
- We will ensure program and space needs are met if unforeseen conditions arise.

- **Can Lindley remain on site?**

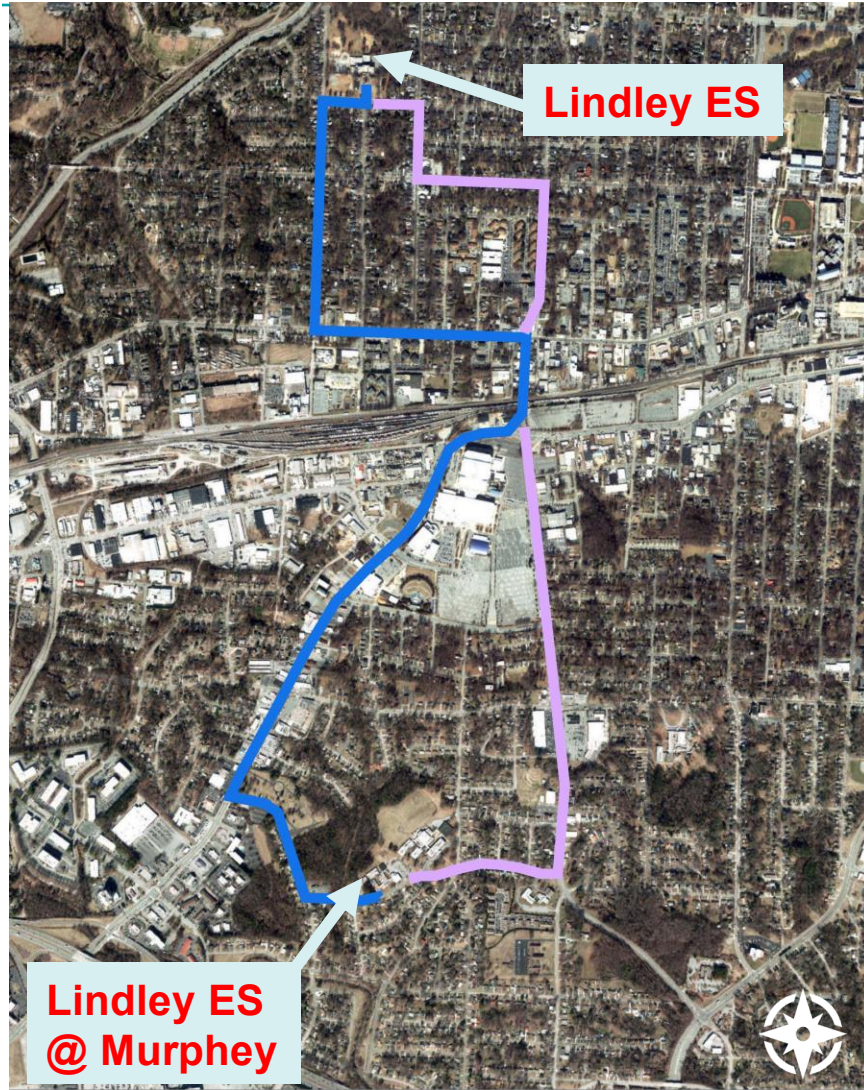
- Staying at current site delays the project by at least two years
- Risks losing funding and increasing costs
- Strains learning environment
- Impacts the overall bond program schedule

- **Transfer Options for Parents**

- Parents may request reassignment until May 31, 2025
- Choice schools are excluded per Board Policy 4150
- For more information on the reassignment process, please visit:
<https://www.gcsnc.com/choose-and-enroll/school-locator/reassignment-process>



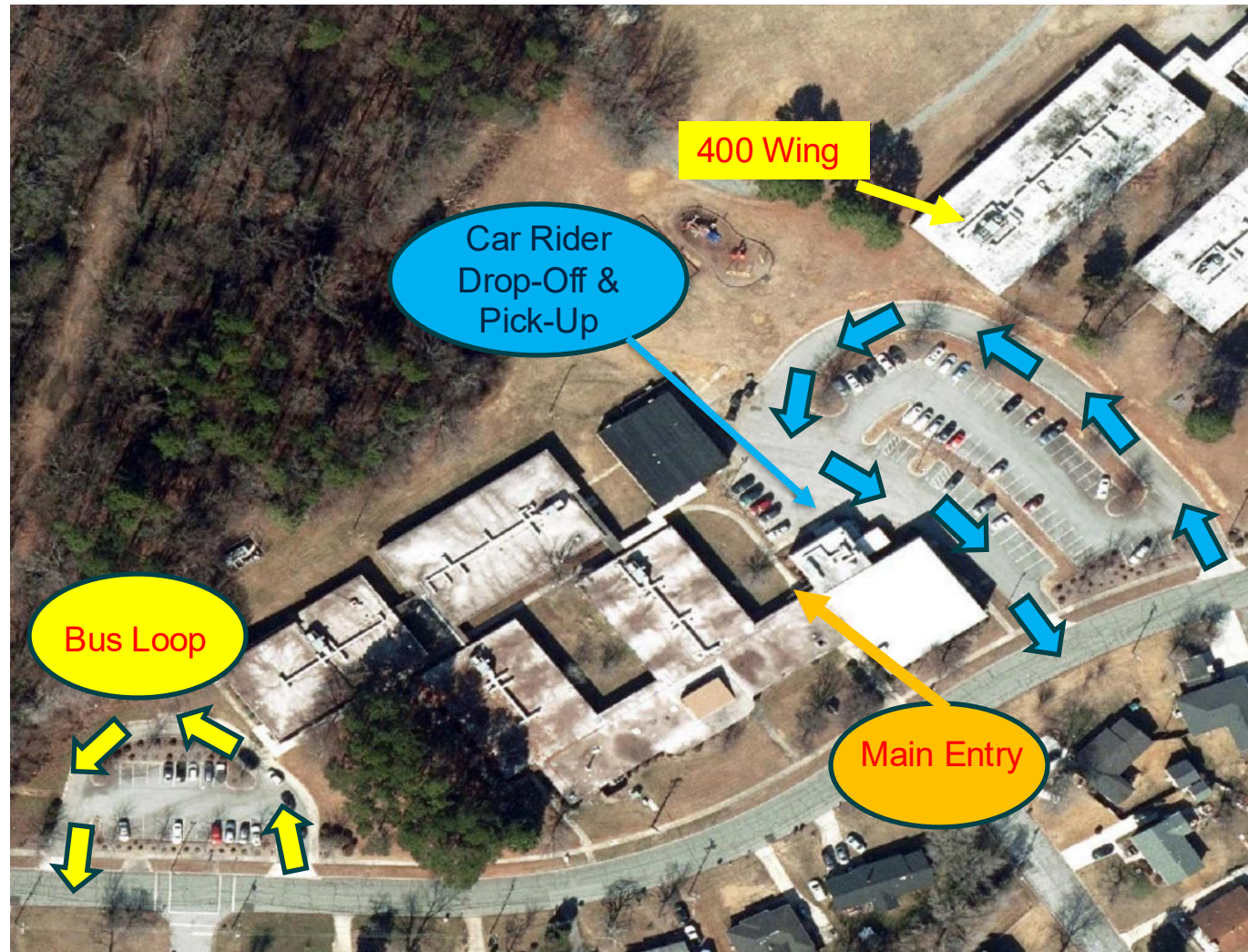
Murphey Location & Proximity



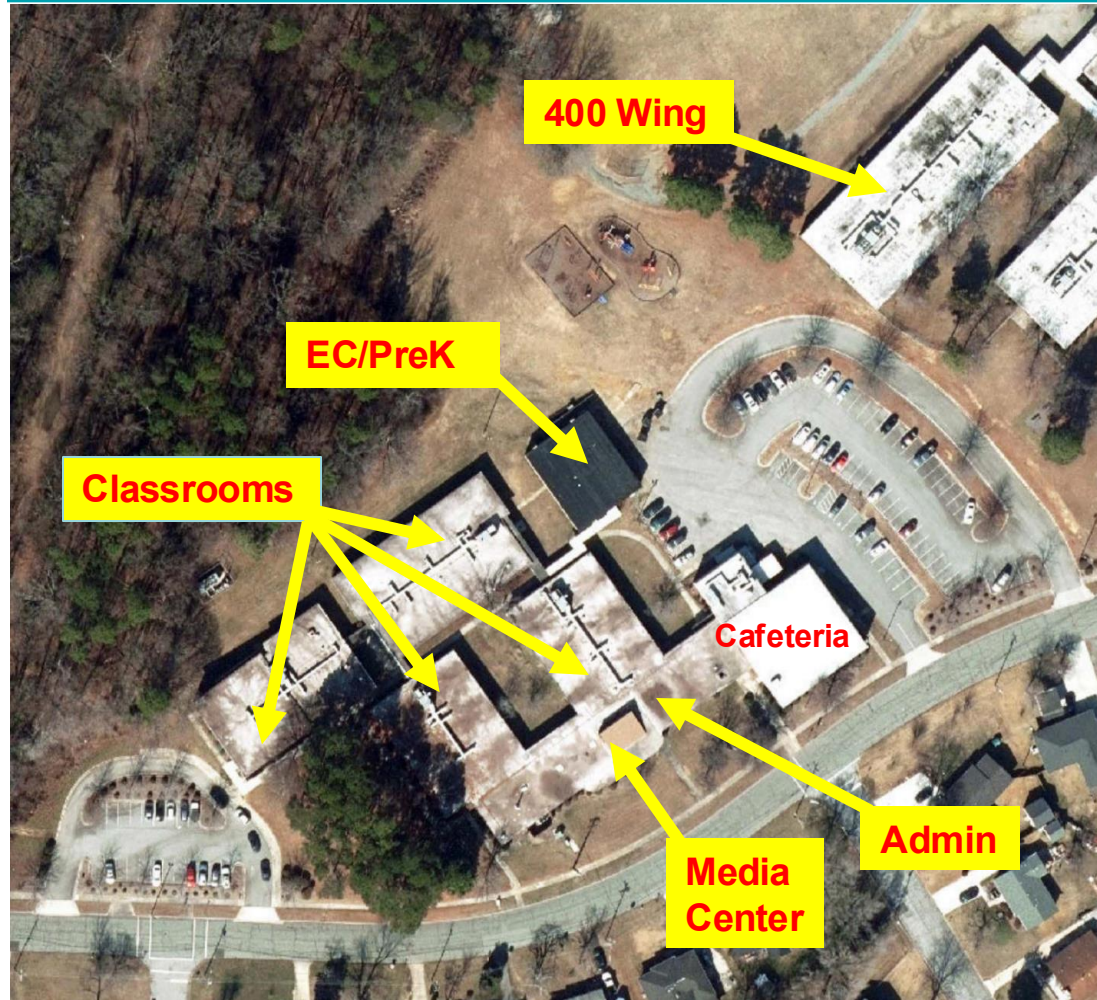
Murphey Traditional Academy will serve as the temporary location.

- Located approximately 2.3 miles (about 7 minutes by car) from Lindley Elementary School.
- Directions from Lindley to Murphey:
 1. Start at 2700 Camden Rd, Greensboro, NC.
 2. Head east on Camden Rd toward Walker Ave.
 3. Turn left onto Walker Ave and continue for 0.5 miles.
 4. Turn right onto S Josephine Boyd St and proceed 1.2 miles.
 5. Turn left onto Ontario St; Murphey is at 2306 Ontario St.

Murphey Site Overview



Lindley Elementary @ Murphey Elementary



- Murphey has adequate capacity for Lindley's student population.
- Jackson Middle's 400-wing at Jackson Middle is exclusively reserved to meet any additional needs.
- Students will have access to classrooms, specials, and playgrounds.
- Layout designed to support daily operations and student needs.

Grades		# of Classrooms
Core Classrooms	Kindergarten	4
	1st	4
	2nd	4
	3rd	4
	4th	4
	5th	4
	Total	24
EC AC		1
EC Pre-K		1
Pre-K		1
Total		27

Questions & Dialogue

