

EL/DL Newsletter

AUGUST , 2022



BACK-TO-SCHOOL INFORMATION

The 22-23 school year is here, and we are very excited to welcome students back to our campuses . As the beginning of school approaches, we want to share some important and exciting information to help you prepare for the year!

It was great to see you all at our Welcome Back Meeting for EL teachers ! They collaborated using the 3Ls framework and kicked off this school year with new ideas and strategies to implement a writing component in our flows. What a great way to start this 22-23 school year!

[#3Ls #juicysentences](#)



DR. HAYES
WELCOMED ALL OUR
EL TEACHERS AND
INTERPRETERS.



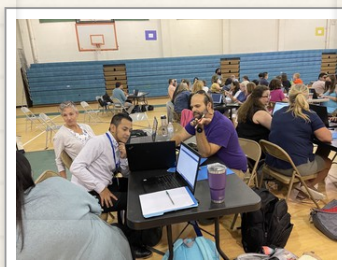
ALLISON VELEZ ,
CONSULTANT FOR
THE COUNCIL OF THE
GREAT CITY
SCHOOLS, LED OUR
3LS PD.



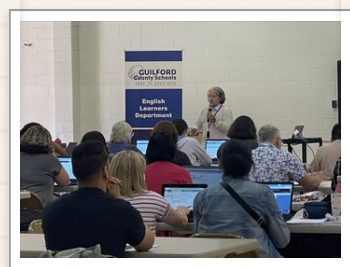
2022-23 3LS
SESSION IN
PROGRESS.



EL INTERPRETERS
WORKED TOGETHER
AND SHARED
STRATEGIES TO
BETTER SERVE OUR
FAMILIES.



PLCS COLLABORATIVE
GROUPS STARTED
CREATING NEW 3LS
MATERIALS.



BETH BIESTER
SHARING TESTING
UPDATES.

GCS SUMMER RISING KINDERGARDEN CAMP

Our EL department offered a Rising Kindergarten Camp at Allen Jay Elementary and Hunter Elementary this summer. Children participated in hands-on learning activities to prepare them for the upcoming school year. They also had the opportunity to try out specials – art, music and P.E.

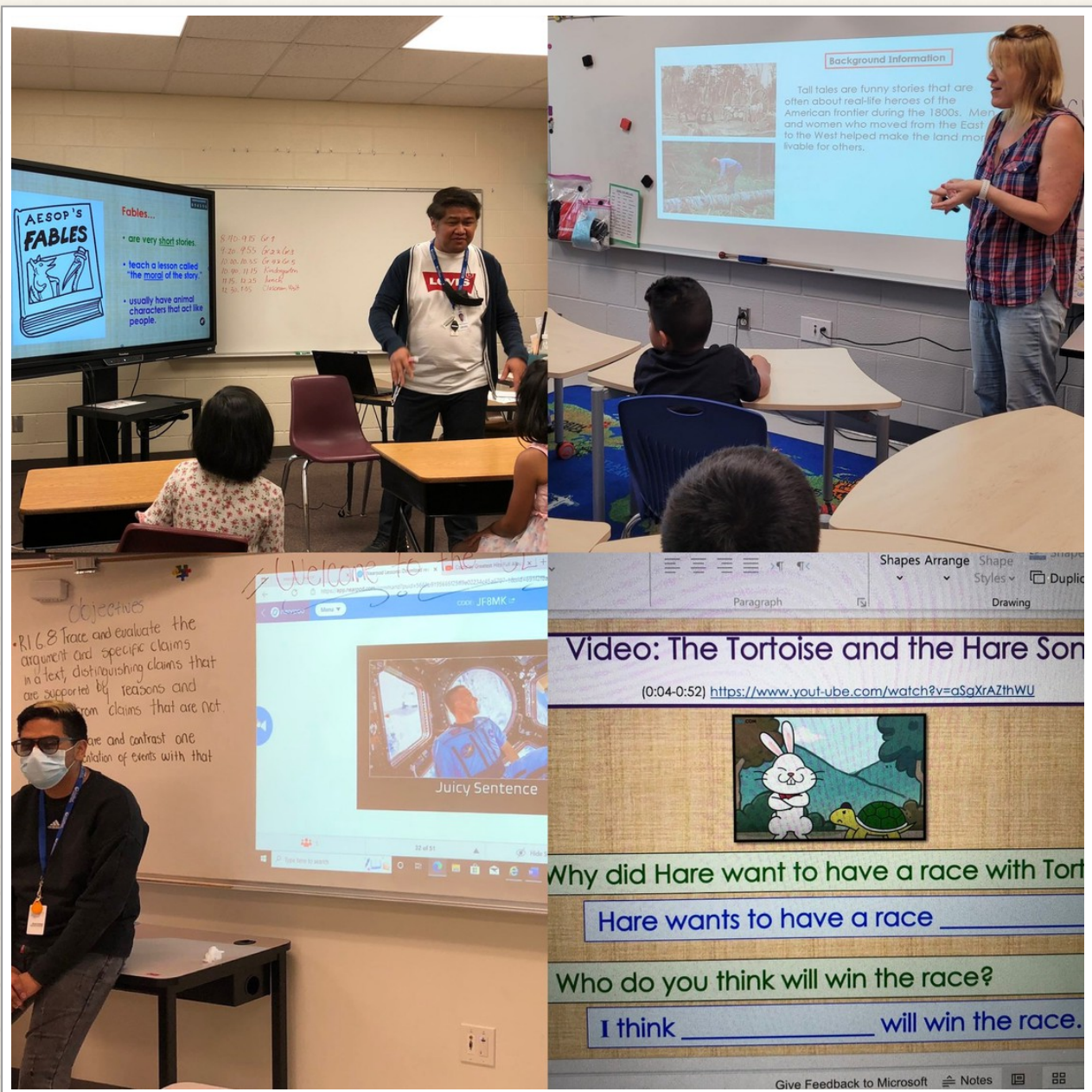
GCS Rising Kindergarten Camp 2022



SUMMER SCHOOL FUN

GCS also offered a no-cost summer school program for our English Learners.

Elementary and Middle School students had the opportunity to participate in enrichment activities based on the 3Ls framework to reinforce their academic language , learning skills and have fun !Thank you to all teachers who participated and made this summer school experience remarkable!

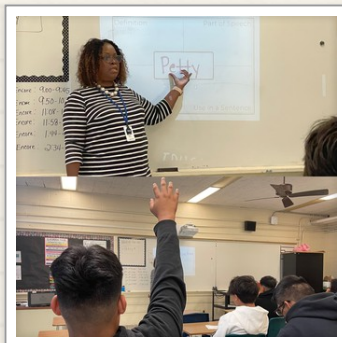


RESTART SCHOOLS 3LS IN ACTION!



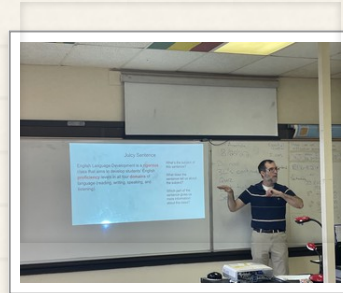
NORTHEAST MIDDLE SCHOOL

Linguistic Frames to help student express their opinions in Ms. Lam's class.



JACKSON MIDDLE

Ms. Walker using Word Play strategies .



FERNDALE MIDDLE

Students are ready to take on a Juicy Sentence In Mr. Butler's class.

BETH'S WIDA TRAINING FOR ELEMENTARY

WHEN

WEDNESDAY, AUG. 31ST, 10AM-12PM

WHERE

THIS IS AN ONLINE EVENT.

MORE INFORMATION

2 Virtual Sessions; 8/31 10:00am- 12:00pm

9/1 10:00 am - 12:00 pm



ACCESS THE RECORDED SESSIONS HERE!

BETH'S WIDA TRAINING FOR MIDDLE AND HIGH

WHEN

THURSDAY, SEP. 1ST, 4-5:30PM

WHERE

THIS IS AN ONLINE EVENT.

MORE INFORMATION

2 Virtual Sessions; 8/31 4:00pm- 05:30pm

9/1 4:00pm- 05:30pm



WIDA REMINDERS

- Complete the WIDA Screener Online training, pass the quiz with 80% or higher, and attend the test training. Remember the certification is required every other year. Please check the WIDA secure portal to see if you need to complete the training this year.
- If you haven't already picked up your ACCESS scores and your new testing tub, email me the day and time that is convenient for your schedule. Please bring your old testing tub(s) from your school(s) with you.
- Instead of sending the Screener score sheets through courier, you will put them in your EL data folder>Editable Data>WIDA Screener 2022-2023. You will only need to make 1 copy of the score sheet. One for the cumulative folder and one for your records.
- When testing a student, you must have a sign on the door stating Testing Do Not Disturb.
- Remember to put the score sheets in your EL data folder. Editable Data>WIDA Screener 2022-2023.

NEW SUPERINTENDENT ANNOUNCED FOR GUILFORD COUNTY SCHOOLS

We are excited to announce the Guilford County Board of Education has named Dr. Whitney Oakley our next superintendent. Having served at nearly every level of the education system, Dr. Oakley brings more than 20 years of educational experience to the role. Dr. Oakley has served as acting superintendent since July and has held key leadership roles in the district since 2012, including chief academic officer and assistant superintendent of teaching,

learning, and professional development.

Dr. Oakley led significant academic initiatives, resulting in increased academic achievement in all tested subject areas at all levels and for all student demographic groups in 2019. She played a critical role in the safe reopening of schools following the COVID-19 pandemic and guiding the district to academic recovery through nationally recognized learning hubs, high-dosage tutoring programs and strong professional development for principals and teachers. An educator at heart and parent of two GCS students, Dr. Oakley is a native of Guilford County and is the first GCS superintendent from Guilford County to lead the district. Congratulations!



5 ITEMS TO REMEMBER !

1. Request EL Admin. access to PowerSchool.
2. Register for EL PD on Performance Matters.
3. Identify your PD Collaborative Group.
4. Check weekly your New Enrollments Spreadsheet on your data folder.
5. Send your schedule to your EL coordinator.



WELCOME TO OUR NEW EL COORDINATORS

Our EL Coordinators team is now complete! Carlos Bartesaghi, Alfonsina Denegri, Vanina Hackett and Soledad Lardies-Dunst. are here to assist you this year 22-23.

Do not hesitate in contacting them !



SECURE YOUR VIRTUAL SEAT AT THE 2022 WIDA ANNUAL CONFERENCE

The virtual portion of the 2022 WIDA Annual Conference takes place **September 28-30** and features two keynote speakers as well as spotlight and concurrent sessions. Space is limited, learn more and register on the [2022 WIDA Annual Conference](#) website.

Enter to win! WIDA is giving away one 2022 WIDA Annual Conference virtual registration, head over to [Instagram](#) to learn how you can win.

Please contact them if you have questions.

WIDA Client Services

866-276-7735

help@wida.us

SOCIAL EMOTIONAL LEARNING SONG

Christina Aguilera - Beautiful (Lyric Video) [HD] [HQ]



FAMILIES REQUESTED TO FILL OUT FREE LUNCH APPLICATION FOR 2022-23 SCHOOL YEAR

The federal waivers that allowed districts to serve meals to all students for free have expired. Families are encouraged to fill out a free meal application at lunchapplication.com to qualify for meal benefits during the 2022-23 school year. The application is available in English and Spanish

What's new with Nearpod: Back to School 2022

Check the new features Nearpod has this year for you. Remember ALL GCS teachers have access to Nearpod! You can access our District Library and find our English Learner Flows created using the 3Is framework .

What better way to teach our students about Social Emotional Learning than through music? Songs can build you up and and help you to heal!

BACK TO SCHOOL 2022-23 IMMUNIZATIONS

The state of North Carolina requires that 7th graders have one dose of their Tdap and MCV

year. Please share this with our families!

Immunizations can be obtained by visiting your health care provider or by visiting the Guilford County Department of Public Health.

Need an appointment? Call 336-641-3245. Appointments are strongly encouraged.

Immunization Clinic Schedule

Greensboro Health Department

4:30 – 6:30 PM

1100 E. Wendover Avenue

Greensboro, NC 27405

High Point Health Department

4:30 – 6:30 PM

501 E. Green Drive

High Point, NC 27260

August 9

August 11

August 18

August 16

August 22-25

August 22-25

August 29 – September 1

August 29 – September 1

Regular clinic appointments available from 8 am TO 5 pm (M-F). Appointments required.

7th Grade

DTaP 5 doses

Polio 4 doses

MMR (or 2 measles, 2 mumps, 1 rubella) 2 doses

Hepatitis B 3 doses

Varicella 1 dose

Tdap 1 dose

Meningococcal conjugate 1 dose

* At all ages and grades, the number of doses required may vary by a child's age and when they were vaccinated.

DID YOU KNOW ?

Learn more [here](#).



DUAL LANGUAGE IMMERSION

NC HAS MORE THAN 225
DUAL LANGUAGE
IMMERSION PROGRAMS

1ST DAY-5TH DAY - 10TH HEADCOUNT

 Microsoft Forms

forms.office.com

ENGLISH LEARNERS DEPARTMENT RESOURCE GUIDE 22=23

 Sign In

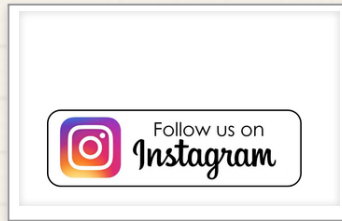
www.gcsnc.com

Guilford County Schools, the third largest school district in North Carolina and the 50th largest of more than 14,000 in the United States, serves more than 70,000 PK-12 students at 126 schools.

FIND US ON SOCIAL MEDIA ...



@ELLGCS



@ELLGCS



@ELLGCS